

AVAILABLE PROPERTY DOWNTOWN*



FOR LEASE— 2818 East Point Street— Suites from 500-2000 SF. Busy intersection of White Way & East Point Street. Large parking area. Bank of America is anchor tenant. Call 678-849-4684.



FOR LEASE— BUILD TO SUIT: 2871 Main St— Approx. 1875 SF + outdoor area in back or build upstairs. High Traffic location on Hwy 29—across from the EP MARTA Train Station. Rent negotiable based on build-out. Juber: 404-786-2343.



FOR LEASE: 1711 Washington Rd , Suite B. Approx. 1000SF—Asking \$14/SF/YEAR . Two blocks from the MARTA Train Station. Located at a high traffic corner, has large parking lot. Currently a hair salon. Call Pamela at 404-394-8601.



FOR SALE/LEASE: 2705 Church St. Just a few blocks from MARTA Train Station, next to LEC. Approx. 5000SF total—Asking \$475k or individual suites available (1250-2000sf). Call Herbert 404-589-3599.



FOR SALE: Davis/Fairfax Ave. Land—approx. .81 acres. Frontage on Davis Ave. & Fairfax Ave., just one block off of Main Street. Asking \$250,000. Call Sally at 404-942-2021.



FOR LEASE: 1820 Washington Road Close to Main St. & MARTA. Quiet office, approx. 12x12 with lots of light, storage closet and hardwood floors. Shared meeting area, break rm & bath. \$700/mth. Incl. utilities, internet & cleaning. Email pbpropertiesllc@gmail.com.



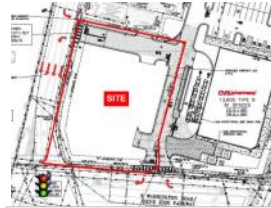
FOR SALE: 2975 Main St. Prime corner site, two blocks from East Point MARTA Train station. Office building/showroom. Approx. 2400SF, .3acre site. Asking \$375,000. Call Emily at 678-793-5464.



FOR LEASE: 3131 Main Street— Approx. 4896 SF, historic brick building. On high traffic Hwy 29/Main Street, right next to Arden's Garden. For more information about the space, call Lina at 404-509-5625.



FOR LEASE: 2821 Main Street — Storefront space available on very high traffic intersection of White Way & Main Street next to the Flower Cottage. Approx. 1500 SF. For more information, call Anil at 404-723-2645 .



FOR SALE OR BUILD-TO-SUIT: Lot Next to CVS Pharmacy - Approx. .7acres, high traffic intersection at East Point Street & Washington Road, across from the East Point MARTA Train Station. Opportunity Zone Job tax credits may be available. Call Brad at 678-384-7672.



FOR LEASE: 1607 -1611 White Way- Approx. 1400 SF. Great location—across from the East Point MARTA Train Station. Located in the Opportunity Zone. Former Dental Office. \$1700/mth. Call John at 770-460-7093.



FOR LEASE: 1526 East Forrest Ave.— Jefferson Station : 800SF –20,000 SF suites available. Call Velda at 404-350-1486. Visit kairosopportunity.com for more information.



FOR LEASE: 1513 East Cleveland Ave.— Buggy Works : 100SF –4,000 SF suites available. Call Velda at 404-350-1486. Visit kairosopportunity.com for more information.



FOR LEASE: 1514 East Cleveland Ave.— Wagon Works : 500SF -15,000 SF suites available, including 5,000 SF event rental space. Call Velda at 404-350-1486. Visit kairosopportunity.com for more information.



FOR LEASE: 2675 Martin Street—South Central Station : 10,00SF+ available. Has access to loading docks. Will sub-divide. Call Velda at 404-350-1486. Visit kairosopportunity.com for more information.



FOR LEASE: 1562 East Forrest Ave.— Annex@Jefferson Station : 100SF –50,000 SF available. Great film production location! Call Velda at 404-350-1486. Visit kairosopportunity.com for more information.



FOR SALE: Main St. Assemblage @ Hwy 166 - Vacant Land Zoned CR. 1.17ac (\$299k) + 1.7ac. (Neg.), for a total of 2.87 ac at ramps to Langford Pkwy/Hwy166— great commuter access. Located by Tyler Perry Studios & Fort Mac MARTA Station. Call 404-270-7059.



FOR SALE: 1250 Womack Ave. Close to Fort McPherson MARTA Train station, and located on corner of high traffic Hwy 29/ Main Street., just off of Hwy 166/Langford Pkwy. Approx. 1559 SF. Listed at \$249,900. Call Carol 770-472-7898.

AVAILABLE PROPERTY DOWNTOWN*

***This information is not guaranteed.**



FOR SALE: 1720 Washington Rd- Former car dealership. Approx. 1.97 acres fronting three streets& two high traffic corners. Approx. 19,000+ SF, 300'x300' street frontage, just three blocks from EP MARTA Station. Call Star, 678-699-4736.



FOR LEASE: 1612 W. Cleveland Ave. One block from the East Point MARTA Train Station. Tall ceilings, loft-style feel with exposed ductwork & large windows. Multiple suites avail. Call 678-453-8029.



FOR SALE: 1777 Washington Road Close to MARTA Train Station. Approx. Two buildings on 1.50 acres. 44 Surface Parking Spaces. Two buildings, each with approx. 9,000 SF. Asking \$1,250,000. Call Skip at 678-320-4800.



FOR SALE: 1846- 1852 Washington Rd – Possible 1.02 Acre Assemblage Close to MARTA station. Corner site w/ high visibility. Two parcels (#1: Hair Salon, 892SF & #2: Church (1968SF)). Call Jared at 404-876-1640 for more info.



FOR LEASE: 1847 Washington Road Close to East Point MARTA Train station, and located on high traffic Washington Road.. Approx. 2346 SF. Contact Ken at 404-763-0002 for more information.



FOR SALE: 3165 Main Street Close to East Point MARTA Train station, and located on high traffic Hwy 29/Main Street.. Approx. 3063 SF. Listed at \$450,000. Contact Kavita at 770-664-9999.



POTENTIAL ASSEMBLAGE: 2975-2999 Main St. Four Lots + 2 Bldgs, .75 ac.+. High traffic, two corner location, on Main St/Hwy 29, by AutoZone, CVS, Taco Bell & EP MARTA Train Station. Opportunity Zone. Call 404-270-7059.



FOR SALE: 2985 Main Street. Close to the East Point MARTA Train station, and located on high traffic Hwy 29/Main St.. Approx. 2880 SF on .08ac. Located in Opportunity Zone. Asking \$149,900. Call Aisha at 404-369-0971.



FOR LEASE: 2148 Newnan Street– Artist Studios. Close to Ft.Mac MARTA station, and located on high traffic Hwy 29/Main St.. Studios from 500SF+ Avail. Call Arts Xchange at 404-6324-4211.



FOR SALE OR LEASE: 2881 Main St. Approx. 6547SF of retail, restaurant or creative office space. Directly across from the EP MARTA Train Station. Potential tenant improvement allowance avail. \$499k or \$7,000/mth. Call Amanda , 404-812-8918.



FOR LEASE: Commercial Suites Available in Mallalieu Pointe. New Mixed-Use Development, 67 Units above the available commercial suites. Commercial suites vary in size. Plenty of parking. High traffic area. Call 404-620-7831.



FOR SALE: 1925 Washington Road Former restaurant space on high traffic Washington Road. Approx. 568 SF. For more information, call 404-843-2500.



FOR SALE: 1621 Connally Dr. Close to MARTA and located just off of high traffic Hwy 29/Main St.. Approx. 1914SF. Addt'l adjacent bldgs. & land available for sale. Call Maurice at 678-521-5151.



FOR SALE: 1607 Connally Dr. Close to MARTA and located just off of high traffic Hwy 29/Main St.. Approx. 2430SF. Addt'l adjacent bldgs. & land available for sale. Call Maurice at 678-521-5151.



FOR SALE: 1625 Connally Dr. Close to MARTA and located just off of high traffic Hwy 29/Main St.. Approx. 3770SF. Addt'l adjacent bldgs. & land available for sale. Call Maurice at 678-521-5151.



FOR SALE: 1613 Connally Dr. Close to MARTA and located just off of high traffic Hwy 29/Main St.. Approx. .37acres of land. Addt'l adjacent bldgs. available for sale. Call Maurice at 678-521-5151.



FOR LEASE: 2466 Lawrence Ave. Close to MARTA and located just off of high traffic Hwy 29/Main St.. Bldg. with approx. 10,000 SF on 1.47acres of land. Call William at 404-281-1759.



FOR SALE: 2903 RN MARTIN ST. Atlanta Utility Works – eligible for historic tax credits. Next to EP MARTA Train Station. Approx. 2 ac. site and 30,000 SF in multiple bldgs., right on the rail line. Call 404-270-7059 for more information.